

# RETAIL/OFFICE

Northpark Drive • Johnson, IA

## FOR LEASE

» 8825 Northpark Court • Johnston, Iowa



### PROPERTY INFORMATION

- Up to 17,138 SF
  - Ideal for 4,000-6,000 SF
- \$12.00-\$16.00/SF NNN
- \$15.00/SF TI Allowance Available
- Prominent Building Signage
- Reserved Parking
- Professional Reception Area
- Open Concept w/ Several Private Offices
- Several Conference Rooms
- Large Training/Meeting Room

### TRAFFIC COUNT

- 32,354 ADT 86th St North to Northpark Dr
- 88,424 ADT 86th St & I-35

### POPULATION

- 1 Mile - 8,690
- 3 Mile - 57,058
- 5 Mile - 138,660

### ADDITIONAL INFORMATION:

Josiah Burton // mobile: 515.720.6293 // email: [josiah@premier-midwest.com](mailto:josiah@premier-midwest.com)

PREMIER



PREMIER REAL ESTATE SERVICES

[www.premier-midwest.com](http://www.premier-midwest.com)

# RETAIL/OFFICE

Northpark Drive • Johnson, IA

## FOR LEASE

» 8825 Northpark Court • Johnston, Iowa



### ADDITIONAL INFORMATION:

Josiah Burton // mobile: 515.720.6293 // email: [josiah@premier-midwest.com](mailto:josiah@premier-midwest.com)

PREMIER



PREMIER REAL ESTATE SERVICES

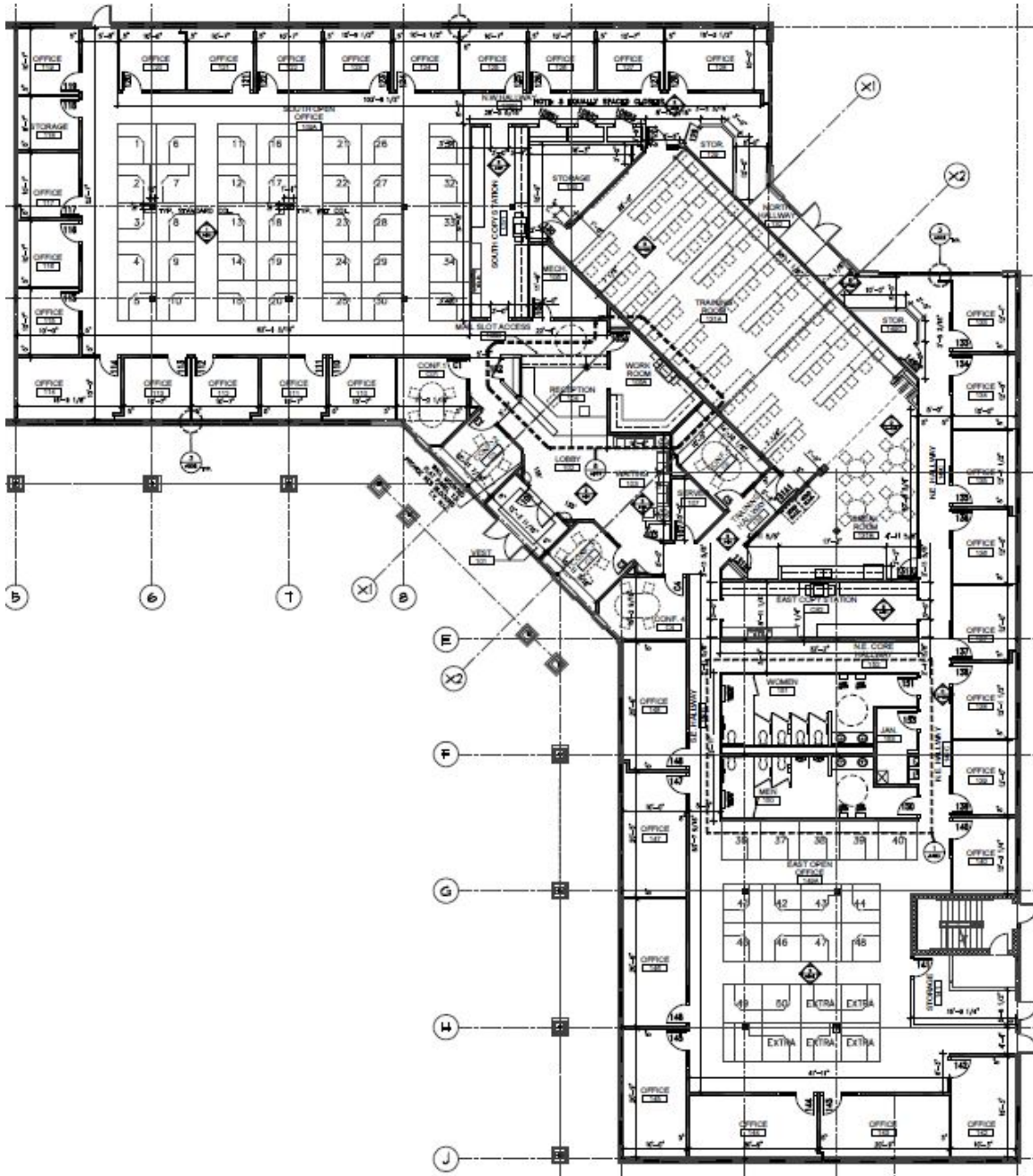
[www.premier-midwest.com](http://www.premier-midwest.com)

# RETAIL/OFFICE

Northpark Drive • Johnson, IA

# FOR LEASE

» 8825 Northpark Court • Johnston, Iowa



## ADDITIONAL INFORMATION:

Josiah Burton // mobile: 515.720.6293 // email: [josiah@premier-midwest.com](mailto:josiah@premier-midwest.com)

PREMIER



PREMIER REAL ESTATE SERVICES

[www.premier-midwest.com](http://www.premier-midwest.com)